



BASSF

BACKWARD CURVED FANS

Fan Components and Material Properties

BASSF fans are made of high quality galvanized steel which is resistant to corrosion. The external rotor motor is used to create a compact structure and the device is max. It is capable of carrying air at a temperature of 40°C.

Fan Structure

The forward sloped fan wheel is made of high quality galvanized steel which is resistant to corrosion and they are manufactured in aerodynamic structure to ensure regular flow. Thanks to its aerodynamic wing structure, it works quietly.

Benefits

It works with low noise levels and is designed to be maintenance-free for long periods of time. It offers space saving according to its capacity.

Due to its frequent wing structure and efficient motor, it produces high flow rate and pressure compared to its dimensions. Provides advantages in areas where space is limited. Speed can be adjusted with speed control devices.

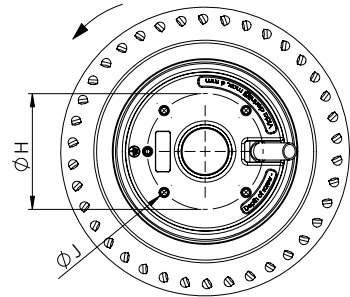
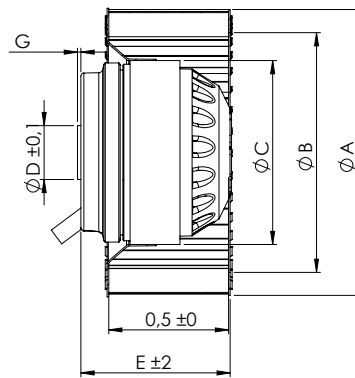
Speed Control

Optional control devices can be provided.
 1~phase products with linear voltage regulator speed control can be done. (see BSC accessory)
 3~phase products with frequency inverter speed control can be done. (see BSC-F accessory)

Usage Areas

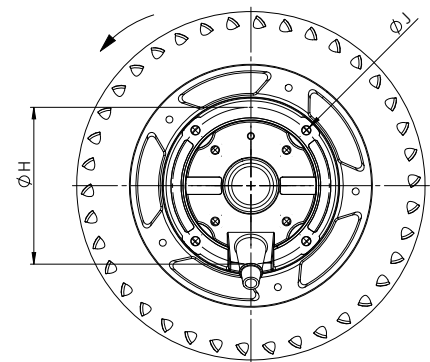
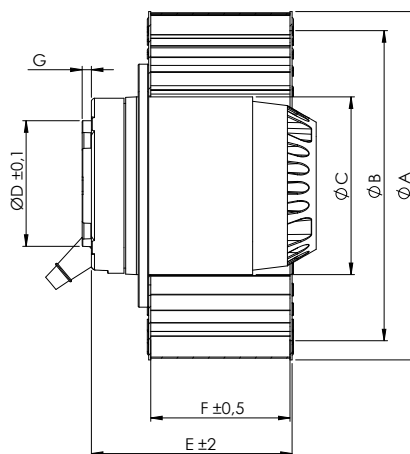
In radial fans, duct fans, cooling of various machines, air circulation in air-conditioners etc. used in areas.

Technical Drawing and Tables



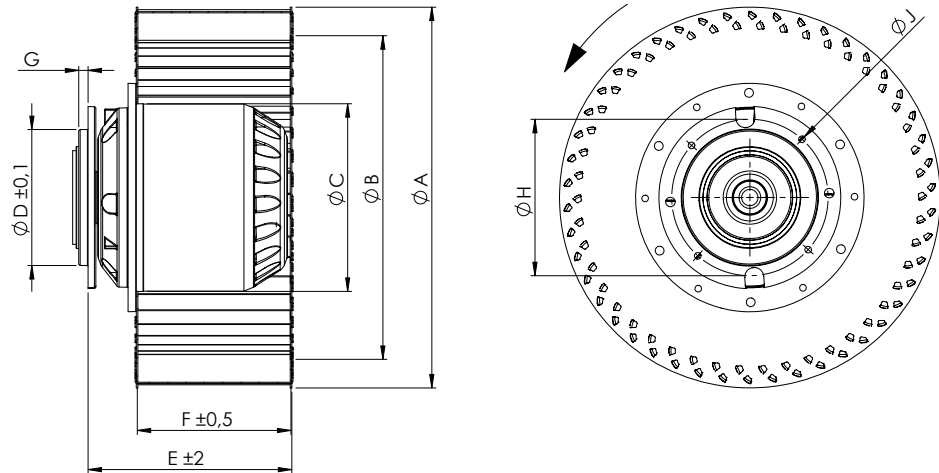
TYPE	A	B	C	D	E	F	G	H	J
BASSF 120-60	120	102	92	27	78	62	2	58	M4
BASSF 140-60	140	124	92	27	80	59	2	58	M4
BASSF 160-60	160	137	92	27	83	62	2	58	M4

Dimensions are in (mm)



TYPE	A	B	C	D	E	F	G	H	J
BASSF 200-90	200	172	102	74	114	80	5	90	M6

Dimensions are in (mm)

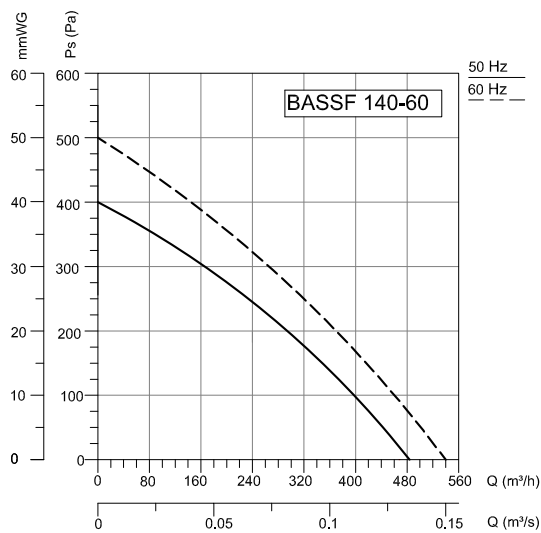
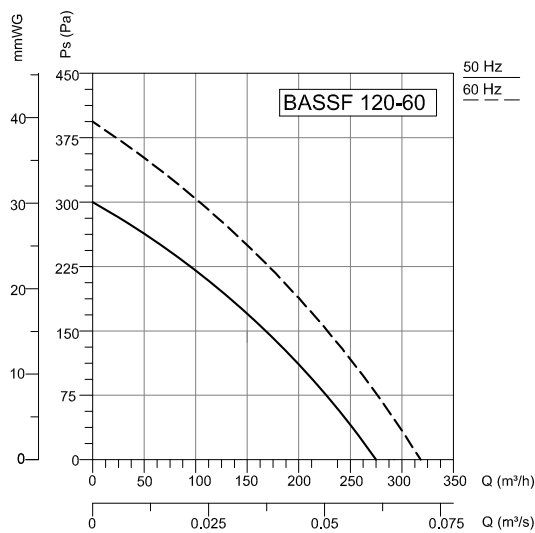


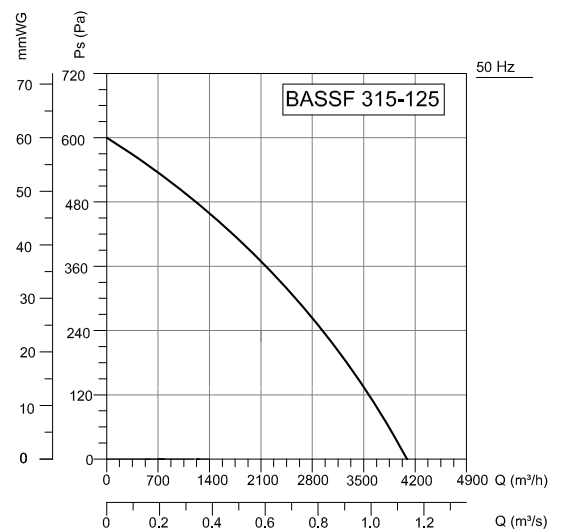
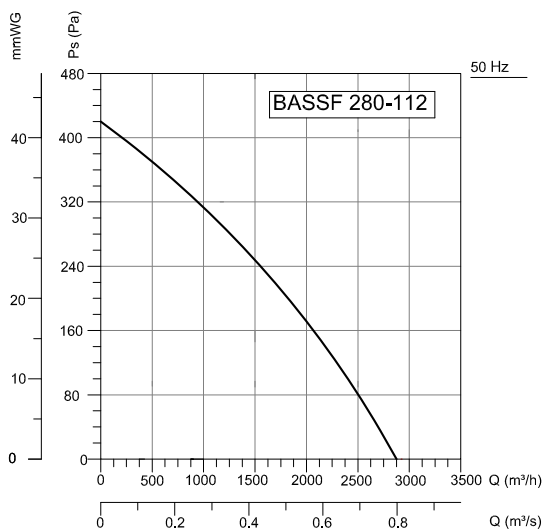
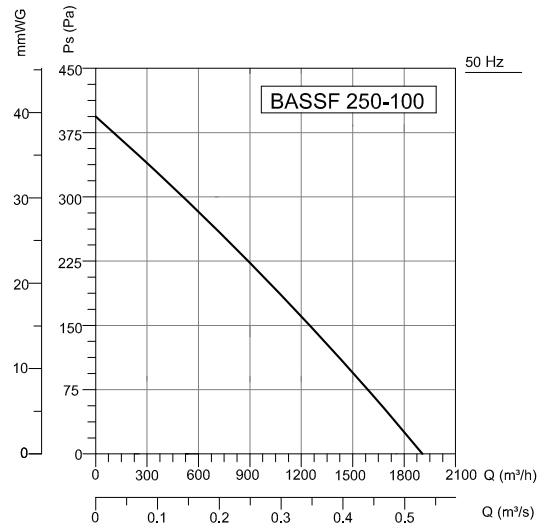
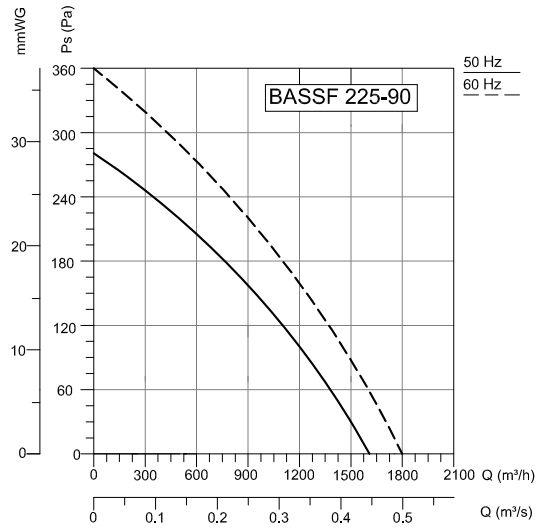
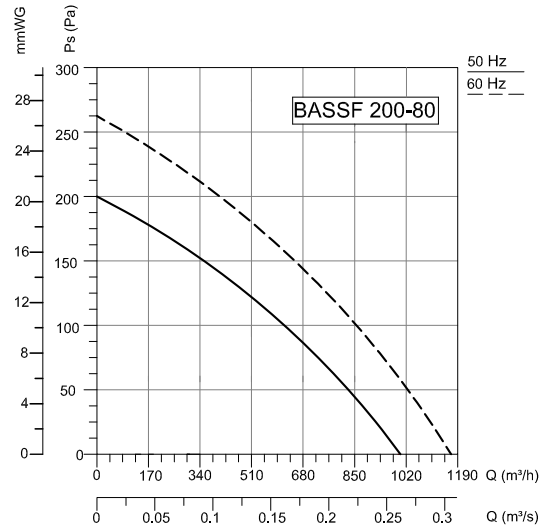
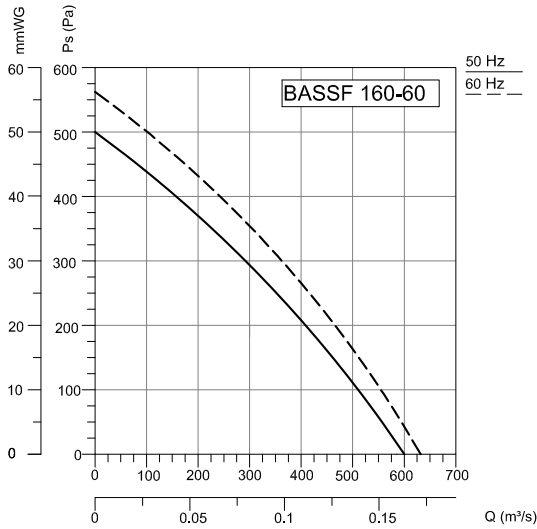
TYPE	A	B	C	D	E	F	G	H	J
BASSF 225-90	225	179	138	100	136	90	6,5	115	M6
BASSF 250-100	250	203	138	100	144	98	6,5	115	M6
BASSF 280-112	280	234	138	100	148	112	6,5	115	M6
BASSF 315-125	315	259	138	100	171	125	6,5	115	M6

Dimensions are in (mm)

TYPE	VOLTAGE	FREQUENCY	POWER	CURRENT	CAPACITOR	SPEED	AIR FLOW	SOUND PRESSURE	INSULATION CLASS	PROTECTION CLASS	WEIGHT
	V	Hz	W	(A)	(μ F)	r.p.m	m ³ /h	dB(A)	Ins.cl.	IP	kg
BASSF 120-60	230	50/60	70/80	0,31/0,35	2,5	2700/3100	275/315	45	B	44	1,4
BASSF 140-60	230	50/60	110/145	0,49/0,65	4	2600/2900	485/540	47	B	44	1,8
BASSF 160-60	230	50/60	165/230	0,73/1,03	6	2600/2750	600/635	50	B	44	2,1
BASSF 200-90	230	50/60	200/240	0,9/1,1	6	1250/1450	1000/1160	53	F	44	12
BASSF 225-90	230	50/60	230/275	0,15/0,18	8	1400/1600	1600/1800	55	F	44	16
BASSF 250-100	230	50	295	2,1	14	1250	1900	58	F	44	19
BASSF 280-112	380	50	950	2,6	-	1350	2850	58	F	44	23
BASSF 315-125	380	50	1230	2,7	-	1280	4000	61	F	44	33

Sound Level Measured from 3m distance in room condition.





Accessories



BSC



BSC-F